

# TOWERSUN 64

Solar street lights with high supply guarantee

## Use

Besides the large TOWERSUN, there is TOWERSUN 64 for high supply guarantee even in extreme weather regions.

The TOWERSUN 64 solar light is a solar-operated LED street lamp that can be used in places where there is no electricity supply and where high supply guarantee is required even during bad light conditions. Sufficient energy can be generated even in regions with bad weather with the help of the cubic aluminium design with 4 photovoltaic modules through the diffused lamp section. The vertical modules prevent snow deposits in winter. Innovative electricity saving functions ensure secure functioning for many nights even in bad weather. In accordance with DIN EN13201, TOWERSUN 64 is suitable for residential roads, streets and parking areas owing to its lighting output.

## Function

Using the 4 photovoltaic modules, the integrated battery is charged throughout the day; this energy is used for efficient operation of the LED head at twilight.

## Options

Besides the standard anthracite, TOWERSUN 64 can also be ordered in other RAL colours at a surcharge.



# Technical Data

<b>Photovoltaic power column</b>	
Modules	Monocrystalline silicon cells
Maximum output power column Pmpp	64W (4 modules) Modules are charged even during overcast weather; 8 to 15% of the module's performance)
Battery	12V 18Ah (NiMh)
Working temperature	-20°C to +50°C
Battery life	approx. 5-6 years (depending on the temperature)
Warranty	2 years
Power column dimensions	237mmx237mmx655mm
Protection type	IP65
Efficiency factor	17%
<b>Lamp</b>	
LED max. output	8x2W
LED max. light flux	1600lm
Typical light flux	from 260lm to 600lm
Autonomous time with full battery max.	68h
Colour temperature	5.300 cold white
LED life	> 50,000h
Miscellaneous	Insect-neutral light

<b>Dimensions</b>	
Total height from floor level	5,100mm
Height of light core from floor level	4,200mm
Total length - Pole	5,500mm
Long pole mounted on the ground	750mm
Materials - Pole	Steel powder-coated / anthracite

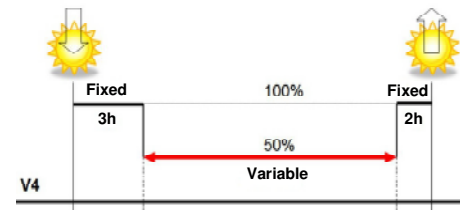
<b>Dimensions and weights for transport (single delivery)</b>	
Light head in carton - Dimensions - Weight	160mmx600mmx120mm 1.5kg
Power column - Dimensions - Weight	950mmx300mmx340mm 22kg
Pole in carton - Length: - Diameter - Weight	5,550mm 110mm 35kg



## Energy and time management:

V	Function	Light output	Time
1	Dim	50%	24:00-5:00
2	Switch off	0%	24:00-5:00
3	Dusk to dawn* (with energy management system)	100%	Lights the entire night
4	Power optimised	--	See illustration

\*We recommend the dusk to dawn mode in TOWERSUN 64 only in countries with high sun irradiation



### Maintenance schedules

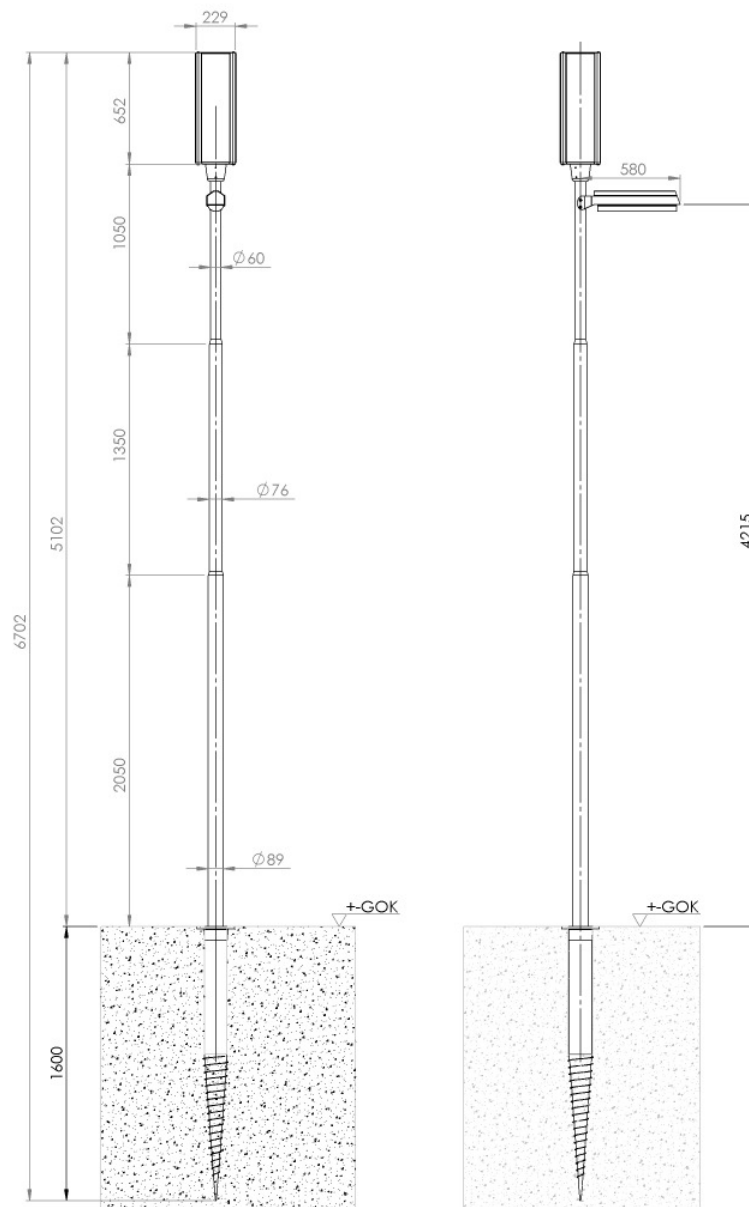
Battery change recommended	after 6 years
LED change recommended	after 12 years
Warranty/Guarantee	2 years (incl. battery)
Warranty PV Module (the warranty period begins from the date of manufacture)	2 years with 100% warranty 5 years warranty at 90% minimum output 10 years warranty at 80% minimum output

### Possibilities of installation on ground

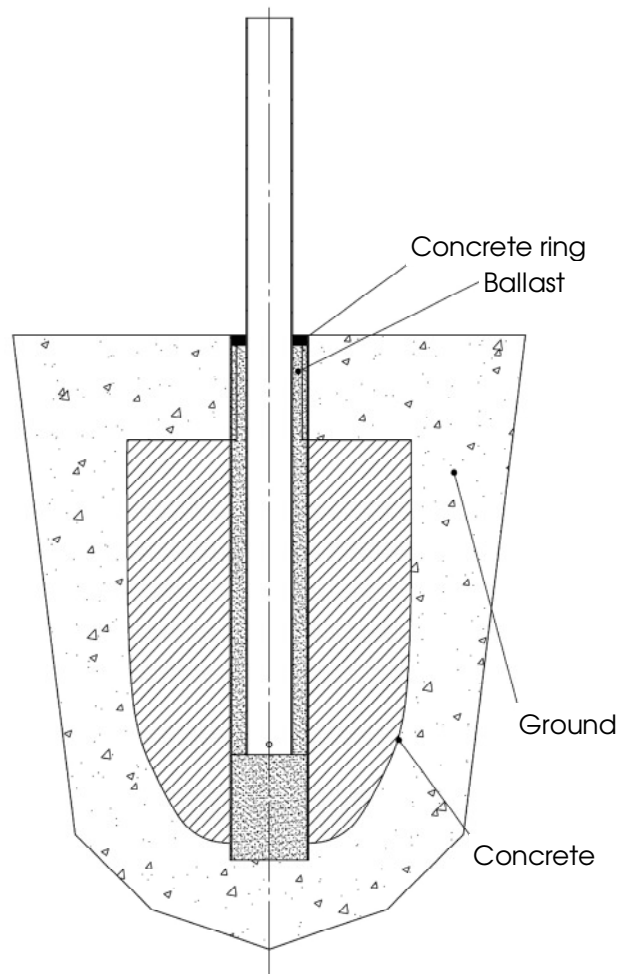
Pipe foundation KRINNER groundscrew	KSF FEL 140mmx1,600mm
--	-----------------------

(subject to technical changes)

### Dimensions:

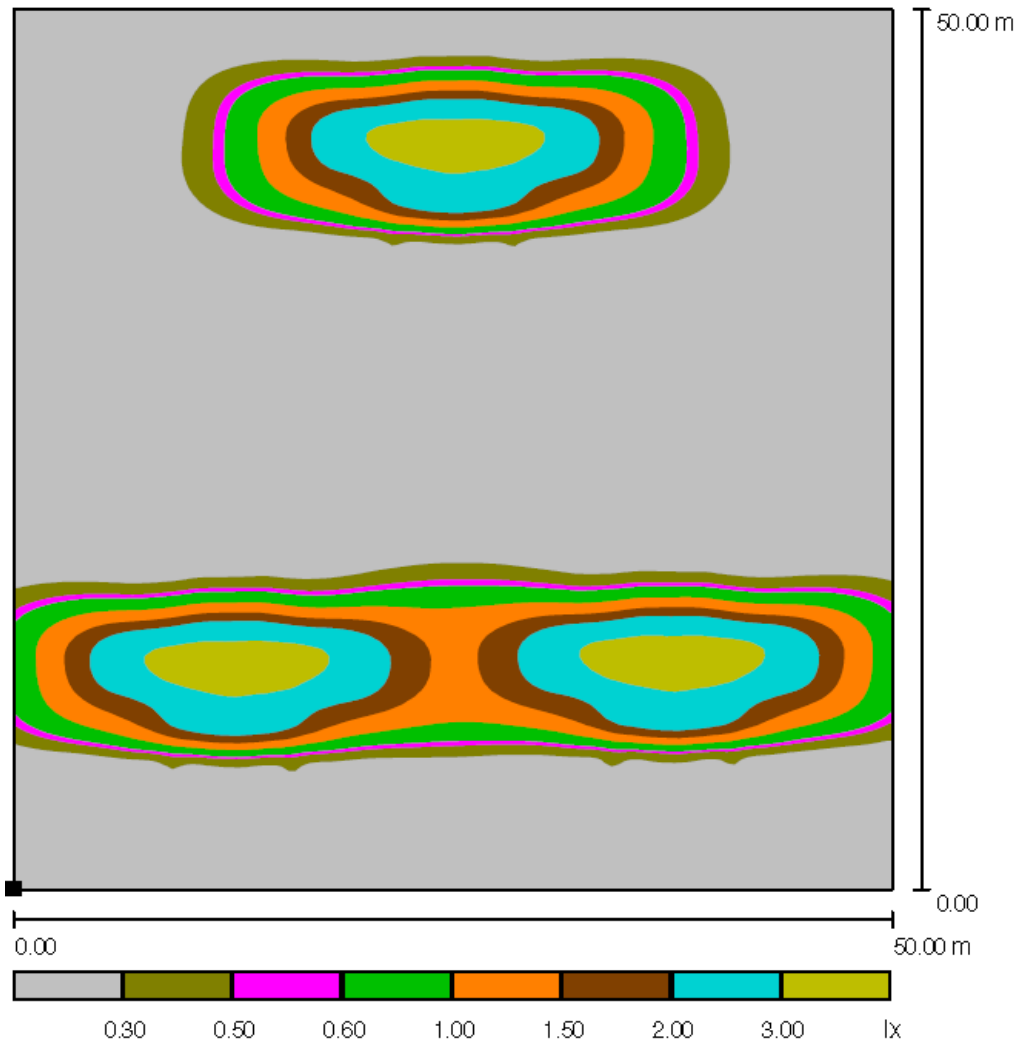


Pipe foundation diagram



**DIALUX Light distribution curve (LDC)**

**Individual and combined overview**



Example gap between poles - 25m, 600 lm