

# TOWER LIGHT

The baby in the TOWER family

## Use

In addition to its larger siblings TOWERSUN and TOWERSUN 64, TOWER LIGHT completes the family for lesser lighting requirements.

The trusted TOWER concept with PV surfaces installed on four sides guarantees sufficient solar intake and reduces the damaging influence of snow deposits on the otherwise slanting PV surfaces.

According to DIN EN13201, the TOWER LIGHT is highly suitable for the lighting classes S5 and S6, in other words lanes with less traffic, public areas and parking areas etc.

## Function

Normally, the specially developed energy management system calculates the optimum LED control to dim the light at specific times if required. The additionally integrated time management allows the customer to choose from 3 settings (V1-V3) without any additional charges (ex factory). TOWER LIGHT normally comes with a heat-resistant battery.

The modular assembly concept can be used to set up TOWER LIGHT with the optional anchor within an hour.

## Options

In order to manage different lighting situations, the lamp comes in two LED head options (for public areas or streets).

Besides the standard anthracite, TOWER LIGHT can also be ordered in other RAL colours at a surcharge.



# Technical Data

Photovoltaic power column	
Material	anodised powder-coated aluminium
Standard colour	Anthracite
Modules	Monocrystalline silicon cells
Maximum output power column Pmpp	64W (4 modules) Modules are charged even during overcast weather; 8 to 15% of the module's performance
Battery	12V, 11Ah NiMh high temperature battery
Working temperature	-20 to +60°C
Battery life	5 to 6 years
Warranty	2 years
Power column dimensions	237mmx237mmx655mm
Warranty (the warranty period begins from the date of manufacture)	2 years with 100% warranty 5 years warranty at 90% minimum output 10 years warranty at 80% minimum output



Lamp	
LED max. output	12x1W
LED max. light flux	1200lm
Typical light flux	from 360lm to 540lm
Autonomous time with full battery max.	55h
Colour temperature	5,600K to 6,500K
LED life	> 50,000 h
Miscellaneous	Insect-neutral light

Dimensions	
Total height from floor level	3,800mm
Height of light core from floor level	3,200mm
Total length - Pole	3,600mm
Long pole mounted on the ground	600mm
Protection type	IP65
Material - Pole	Aluminium powder-coated / anthracite
Warranty/Guarantee	2 years (incl. battery)

Dimensions and weights for transport	
Light head in carton - Dimensions - Weight	950mmx300mmx340mm 21,5kg
Pole in carton - Length - Diameter - Weight	3,700mm 150mm 16kg

## Energy and time management:

V	Function	Light output	Time
1	Dim	50%	24:00-5:00
2	Switch off	0%	24:00-5:00
3	Dusk to dawn* (with energy management system)	100%	Lights the entire night

\*We recommend the dusk to dawn mode only in countries with high sun irradiat

Krinner groundscrew in carton	
- Length	1,100mm
- Diameter	150mm
- Weight	7.5kg

### Maintenance schedules

Battery change recommended	after 6 years
LED change recommended	after 12 years

### Tools for assembly (included)

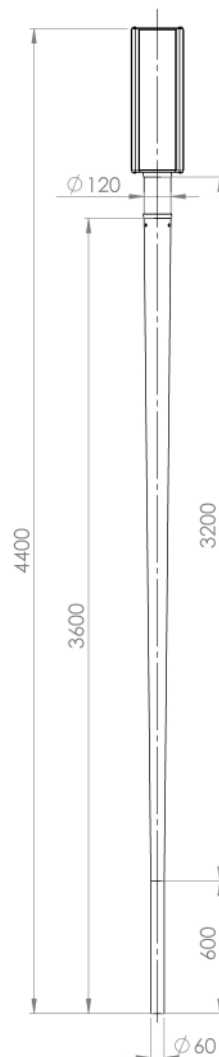
1 Allen screw (Inbus)	4mm
-----------------------	-----

### Possibilities of installation in the ground

Pipe foundation KRINNER groundscrew	KSF G3 114mmx1000mm
--	---------------------

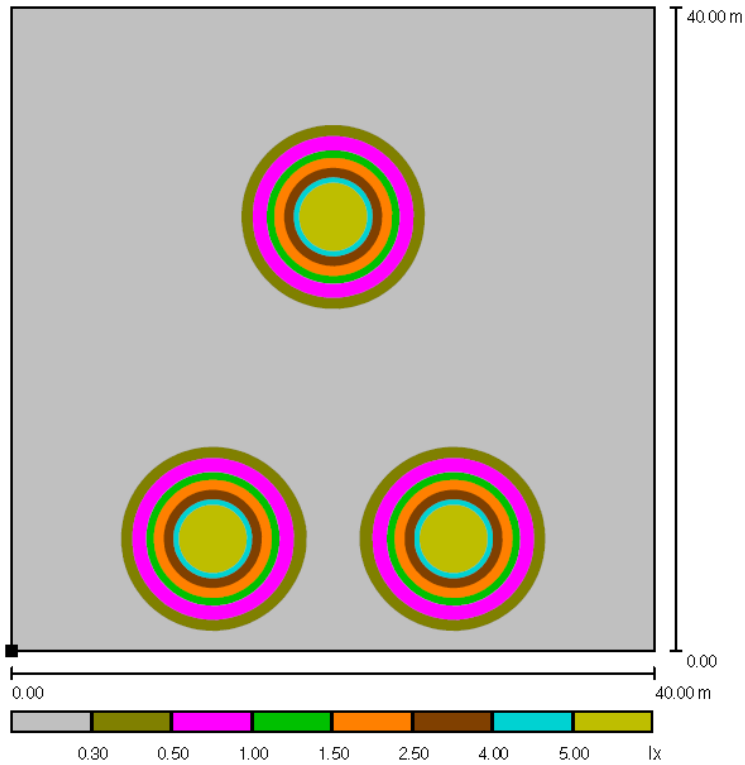
(subject to technical changes)

### Dimensions:

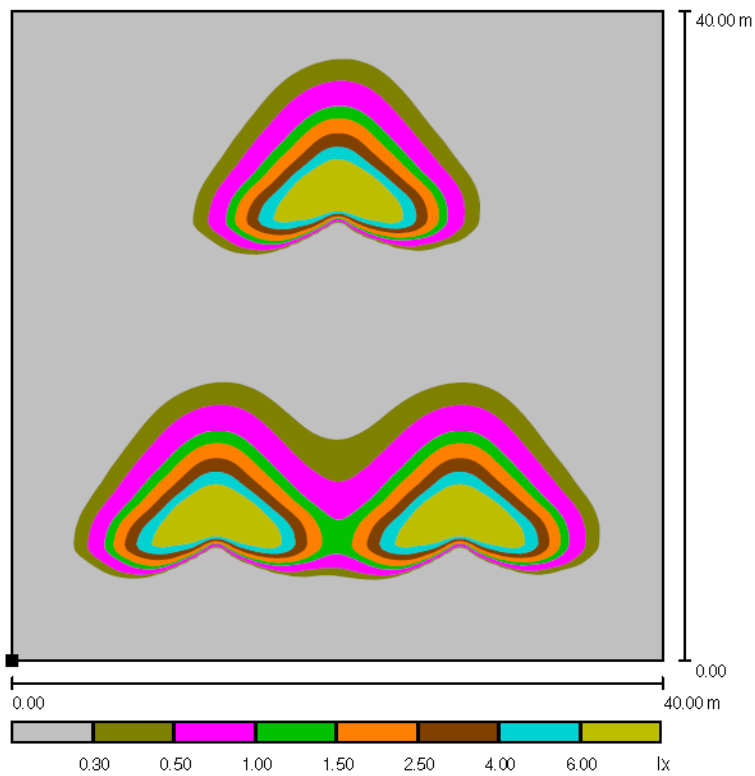


**DIALUX Light distribution curve (LDC)**

**Individual and combined overview**



Public area models



Street models