



Fimpex AG  
Landstrasse 1  
9495 Triesen  
00423 230 15 50  
office@fimpex.com www.fimpex.com



# CORPORATE PROFILE

**NASDAQ LISTED  
CANADIAN COMPANY**

Canadian Solar Inc. is one of the largest solar companies in the world. As a leading vertically-integrated manufacturer of ingots, wafers, cells, solar modules and solar systems, Canadian Solar delivers solar power products of uncompromising quality to worldwide customers. Canadian Solar's world class team of professionals works closely with our customers to provide them with solutions for all their solar needs.

Canadian Solar was founded in Canada in 2001 and was successfully listed on NASDAQ Exchange (symbol: CSIQ) in November 2006. To date, Canadian Solar has successfully established seven wholly-owned manufacturing subsidiaries in China, with a module capacity of 820MW in 2009. Canadian Solar is headquartered in Ontario, Canada, with subsidiaries in USA, Germany, Spain, Italy, Japan, Korea and China.



## Global Operations and Business

**EVOLVING INTO A  
MARKET LEADER**

With global operations covering three major continents, Canadian Solar is able to combine the advanced technology and management experience from the West with the low manufacturing cost and fast products delivery from the East to best serve its customers' needs.

Canadian Solar has been serving customers around the world, with major customers in Germany, Spain, Italy, USA, Canada, Korea, Japan and China. Canadian Solar's modules have been used in various ground mounted large solar power plants as well as roof top solar power systems in different climate zones. These systems are either grid-connected or off-grid power systems ranging from 25KW to over 15 MW systems.



TRUST-WORTHY

CUSTOMER VALUE

SOPHISTICATION

## Milestones

- 2009.10 High-Performance CS Modules Series Set New PTC Ratings Records for P-Type Silicon Modules
- 2009.09 Canadian Solar's PV Reliability Testing Centre Joins Intertek's 'Satellite Program'
- 2009.07 CSI Photovoltaic Reliability Test Center accredited by the China National Accreditation Service for Conformity Assessment ("CNAS")
- 2009.06 The first PV manufacturer to offer six year product warranty
- 2009.02 Opened New Research Center in Suzhou
- 2009.01 Set up 1st Provincial PV Cell Research Center in Jiangsu, China
- 2008.12 Awarded one of the top 10 fastest growing companies in Asia
- 2008.12 Completed Phase II cell capacity of 170MW, increasing total capacity to 270MW
- 2008.08 Completed Phase I of Ingot-Wafer project in Luoyang with a capacity of 150MW
- 2008.07 Certified for QC080000HSPM (Hazardous Substance Process Management)
- 2008.05 Completed BIPV module project for 2008 Olympic Game
- 2008.01 Opened 23,000sqm module manufacturing Centre in Changshu, China
- 2007.12 Completed Phase I of cell production with a total cell capacity of 100 MW
- 2006.11 Listed on NASDAQ Stock Exchange
- 2005.06 Selected as Volkswagen's Tier 1 supplier
- 2005.04 Completed 1<sup>st</sup> Solar Power station in Jiangsu, China
- 2003.05 Certified for ISO9001:2000 and ISO/TS16949:2002
- 2001.11 Incorporation of Canadian Solar Inc. in Canada

## 2009 Production Highlights

- 2009 full year module shipments of 325.5MW
- 2009 module capacity of 820MW
- 2009 cell capacity of 420MW

## Product Manufacturing



- Top ranked PVUSA (PTC) rating in California for higher energy production
- 6 years product warranty (materials and workmanship); 25 years module power output warranty
- Industry leading plus only power tolerance: +5W (tight to +2%)
- Strong framed module, passing mechanical load test of 5400Pa to withstand heavier snow load
- Ultra reliable in corrosive atmosphere, verified by IEC61701 Salt Mist Corrosion Testing
- The 1st manufacturer in the PV industry certified for ISO:TS16949 (The automotive quality management system) in module production since 2003
- ISO17025 qualified manufacturer owned testing lab, fully complying to IEC, TUV, UL testing standards



### World Class R&D and Product Innovation

- Commitment to product innovation, continuously exceeding customers' expectation for high quality products
- Over 100 scientists and engineers working on latest PV technology development in ingot-wafer-cell-module production
- Joint research projects with long-term strategic partners, such as DuPont, the University of Toronto and Shanghai JiaoTong University



### Testing Laboratory with IEC, TUV, VDE and UL Testing Standards

- ISO17025 qualified manufacturer owned testing lab
- Fully complying with IEC, VDE and UL testing standards
- Industry leading testing operation process and methodology
- Stringent raw material, components and product testing to guarantee high reliability and high quality



### Industry Leading Production

- World class production facilities
- Professional top management team with advanced engineering and production know-how
- Well experienced and trained engineering and technical teams
- Continuous improvement on production process and operation
- Complying with international quality and safety standards of IEC, VDE and UL



### Advanced Process and Quality System

- ISO:TS 16949 Quality management system for Automotive Industry
- ISO 9001:2008 Quality management for PV systems and solar modules
- QC080000 IECQ Certificate of Conformity (Hazardous Substance Process Management)



# PRODUCT PORTFOLIO

Canadian Solar is committed to customers' success. The cornerstones of Canadian Solar's product strategy are world class quality, reliability and customized solar power solutions. Canadian Solar provides the solar industry with the widest PV product lines from 0.03W to 300W. Canadian Solar also offers customized PV products and OEM service around the world.



## On-grid Applications

Other than safety disconnectors, mounting structure and wiring, an on-grid system includes solar modules, a grid-tied inverter and an electric power meter. The on-grid application can be connected to a utility grid as an additional power source. Home and business owners using on-grid systems can not only enjoy lower monthly utility bills through net metering but also contribute to the environment protection.



TRUST-WORTHY

CUSTOMER VALUE

SOPHISTICATION

## Off-grid Applications

An off-grid system means that the solar power system is not connected to the electricity grid. An off-grid solar system has solar modules, charge controllers, batteries and inverters as its main components. The solar modules are physically mounted on a mounting structure and the DC power they produce is stored in the battery bank.



## Standard Module

Canadian solar's leading cell and module technology guarantees its modules' reliability, backed by 25 year performance warranty. All series of standard modules are manufactured to the strictest engineering guidelines and international standards of quality and safety.



## BIPV Module

BIPV modules use double sided tempered glass with solar cells laminated in between. BIPV modules are ideal for skylights and facades. BIPV modules can not only be used as a part of construction material for a building, but also as a source of electricity.



## All-black Module

All-black modules are robust all purpose solar modules. These modules can be used for on-grid and off-grid solar applications. The all-black modules use high efficiency mono-crystalline silicon cells, laminated with black back sheet and framed with black anodized aluminum. The all-black modules are the perfect choice of customers who not only are keen on using solar energy, but also look for aesthetic value.



## Solar Home System(SHS)

Solar home system(SHS) typically operates at a rated voltage of 12 V DC/24V DC and provides power for lights, radio, a small TV or appliances.

Electrical energy provided by SHS and recommendations for consumer's daily running times:

SHS Model	System Power	System Voltage	Battery Size	Total Daily Discharge	Lamp	Radio	Television	Fan	Fridge	Other
CS-SHS-008-12-005	08Wp	12V DC	5Ah	20wh	2*0.7W*5h					
CS-SHS-010-12-008	10Wp	12V DC	8Ah	30wh	1*5W*5h					
CS-SHS-014-12-017	14Wp	12V DC	17Ah	50wh	1*5W*5h	1*5W*2h				
CS-SHS-030-12-024	30Wp	12V DC	24Ah	113wh	2*11W*3h	1*5W*2h	1*20W*2h			
CS-SHS-040-12-040	40Wp	12V DC	40Ah	146wh	2*11W*5h	1*5W*5h	1*40W*2h			
CS-SHS-060-12-055	60Wp	12V DC	55Ah	220wh	2*11W*5h	1*5W*5h	1*40W*2h			1*50W*1h
CS-SHS-080-12-080	80Wp	12V DC	80Ah	293wh	3*11W*3h	1*5W*5h	1*40W*2h			1*50W*1h
CS-SHS-130-12-120	130Wp	12V DC	120Ah	476wh	4*11W*3h	1*5W*5h	1*40W*3h	1*20W*1h		1*50W*3h
CS-SHS-160-12-150	160Wp	12V DC	150Ah	503wh	4*11W*3h	1*5W*5h	1*70W*3h	1*30W*1h		1*50W*2h
CS-SHS-200-12-200	200Wp	12V DC	200Ah	628wh	4*11W*3h	1*5W*5h	1*70W*3h	1*30W*1h	200W	
CS-SHS-260-12-300	260Wp	12V DC	300Ah	817wh	4*11W*4h	1*5W*5h	1*70W*3h	1*30W*1h	200W	1*70W*2h
CS-SHS-340-24-180	340Wp	24V DC	180Ah	1069wh	5*11W*5h	1*5W*6h	1*70W*4h	1*30W*1h	200W	1*70W*3h
CS-SHS-440-24-240	440Wp	24V DC	240Ah	1383wh	5*11W*5h	1*5W*6h	1*70W*4h	1*30W*2h	400W	1*100W*1h
CS-SHS-600-24-300	600Wp	24V DC	300Ah	1886wh	5*11W*6h	1*5W*8h	2*70W*4h	1*40W*2h	400W	1*100W*3h
CS-SHS-850-24-460	850Wp	24V DC	460Ah	2672wh	5*11W*8h	1*5W*8h	2*70W*6h	1*40W*4h	600W	1*100W*4h

\*CanadaSolar offers off-grid SHS with up to 25KWh/day electricity consumption. Please contact sales representative for other configurations and information on irradiation conditions at your location. Energy yield in Watt-hours (Wh) on a sunny day. Reference locations: Las Vegas USA ( 5.24KWh/m<sup>2</sup>/day).

## Check your individual energy requirement

To determine load: For each appliance you want to connect to SHS, use power consumption in watts multiply the number of hours which is expected to operate on an average day to obtain watt-hours (Wh).

Load	Description	Watts(amps×volts)	X	Hours per Day	=	Watt-Hours per Day
Load 1			X		=	
Load 2			X		=	
Load 3			X		=	
TOTAL watt-hours per day:						



## Solar Street Light

Solar street lights are powered by solar energy, which can be simply and rapidly installed with a minimum of maintenance required.



85Watt solar Street Light System Duty Performance and Specification

Item	Feature	Unit	Description	Remark
1	DC Lamp Consumed Power	W	20W	Mounting height=4M
2	Working Time	Hrs/Day	6hrs/day	Full run
3	Solar Module	Wp	85Wp	Depends on Local ESH
4	Endurance Day for Cloud	Days	5-7 days	Under full capacity
5	Battery Voltage/Capacity	V	12V/100AH	
6	Solar controller		intelligent controller	
7	Temperature range	°C	-30-65°C	



175Watt solar Street Light System Duty Performance and Specification

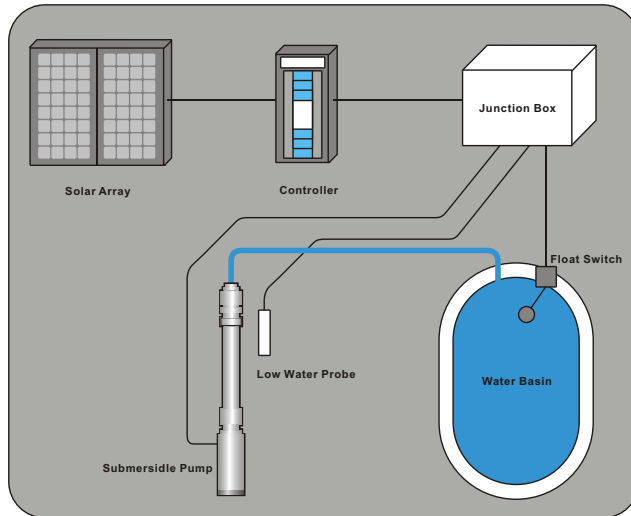
序号	Feature	Unit	Description	Remark
1	DC Lamp Consumed Power	W	40W	Mounting height=6M
2	Working Time	Hrs/Day	10hrs/day	Full run
3	Solar Module	Wp	175Wp	Depends on Local ESH
4	Endurance Day for Cloud	Days	3-5 days	Under full capacity
5	Battery Voltage/Capacity	V	12V/100AH	
6	Solar controller		intelligent controller	
7	Temperature range	°C	-30-65°C	



### Solar Water Pump

The solar water pump is used in remote locations to water live stock, irrigation. Compared to other water system options (powered by diesel or windmill), this clean, quiet and efficient solar solution also lowers labor and maintenance costs.

Solar Water Pump configuration and system sizes:



### Specialty Products

#### Solar Car Battery Charger

This solar charger is designed to prevent 12V batteries from self-draining and to reduce the extra cost for battery replacement. It compensates for the loss of battery voltage and prevents small electrical drains by constantly trickle charging the battery, using energy generated from the sunlight. These chargers are ideal for batteries experiencing little use due to prolonged vehicle storage.



#### Solar Power Portable Charger

Portable Solar Charger combines solar panels and a high capacity battery to collect, store and produce DC power to power portable devices like notebook, MP3/MP4 and mobile phones. It is small in size, highly reliable and extremely convenient to use in areas with no easy access to electricity.



#### Outdoor Solar Portable PAC Lighting

The Power PAC is a complete portable solar power solution, featuring solar power charging and lighting within a single PAC.

1.50Wp System	2.100Wp System	3.500Wp System	4.1000Wp System
Maximum lift:10m Flow rate:0.5-0.8m3/d Solar module array:50Wp	Maximum lift:20m Flow rate:0.8-1.2m3/d Solar module array: 100Wp	Maximum lift:20m Flow rate:4.0-5.5m3/d Solar module array:500Wp	Maximum lift:30m Flow rate:6.5-8.5m3/d Solar module array:1000Wp

# PROJECT REFERENCES

TRUST-WORTHY

CUSTOMER VALUE

SOPHISTICATION

## In Spain



**Location :** Spain  
**Module Type:** CS5A, CS6A  
**System Size:** 6MWp  
**Completion :** September 2008

## In Spain



**Location :** Spain  
**Module Type:** CS6P  
**System Size:** 4.7MWp  
**Completion :** September 2008

## In Spain



**Location :** Spain  
**Module Type:** CS6P  
**System Size:** 1.5876 MWp  
**Completion :** October 2008

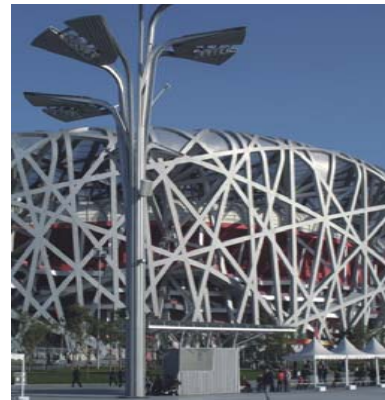
## In Germany



**Location :** Germany  
**Module Type:** CS6P  
**System Size:** 3.5MWp  
**Completion :** 2008

## In Germany

**Location :** Göttelborn, Germany  
**Module Type:** CS6A Poly  
**System Size:** 4.4 MWp (Phase 2)  
**Completion :** October 2007



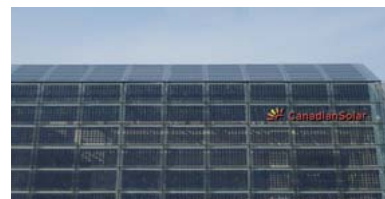
## BIPV Project for Beijing Olympic

**Location :** Beijing, China  
**Module Type:** BIPV-88W  
**System Size:** 66KWp  
**Completion :** May 2008



## In Spain

**Location :** Mahora, Spain  
**Module Type:** CS6P  
**System Size:** 15 MWp  
**Completion :** August 2008



## BIPV Project in Luoyang, China

**Location :** Luoyang , China  
**Module Type:** BIPV-110W  
**System Size:** 15KWp  
**Completion :** Early 2009



## China Mobile Project (Telecom Transmission Base Station)

**Location :** Qinghai, China  
**Module Type:** CS6P  
**System Size:** 6.5 KWp  
**Completion :** August 2006

# MODULE OFFERINGS



Module No	CS5P-220M	CS5P-230M	CS5P-240M	CS5A-170M	CS5A-180M	CS5C-80M	CS5C-90M	CS5E-15M	CS5E-20M	CS5F-12M	
<b>Electrical Characteristics</b>											
Rated Power	Pmax	220W	230W	240W	170W	180W	80W	90W	15W	20W	12W
Voltage at Typical Power	Vmp(V)	47V	47.5V	48.1V	35.6V	36.1V	17.4V	17.9V	17.3V	17.5V	17.3V
Current at Typical Power	Imp(A)	4.68A	4.84A	4.99A	4.78A	4.99A	4.6A	5.04A	0.87A	1.15A	0.69A
Open Circuit Voltage	Voc(V)	58.8V	59.1V	59.4V	44.3V	44.6V	21.7V	22.1V	21.4V	21.8V	21.5V
Short Circuit Current	Isc(A)	5.01A	5.18A	5.34A	5.12A	5.34A	4.99A	5.41A	0.97A	1.24A	0.78A
Power Tolerance		+5W(approx. +2.1%)		+5W(approx. +2.8%)		+5W(approx. +6%)		+2W(approx. +10%)		+1W(approx. +10%)	
Maximum System Voltage		1,000V(IEC)/600V(UL)		1,000V(IEC)/600V(UL)		1,000V(IEC)/600V(UL)		1,000V(IEC)/600V(UL)		1,000V(IEC)/600V(UL)	
Maximum Series Fuse Rating		10A		10A		10A		2.5A		1.5A	
NOCT		45°C		45°C		45°C		45°C		45°C	
Temp. Coefficient	Voc	-0.35%/°C		-0.35%/°C		-0.35%/°C		-0.35%/°C		-0.35%/°C	
	Isc	0.060%/°C		0.060%/°C		0.060%/°C		0.060%/°C		0.060%/°C	
	Pmax	-0.45%/°C		-0.45%/°C		-0.45%/°C		-0.45%/°C		-0.45%/°C	
<b>Cell Information</b>											
Cell Material		Mono		Mono		Mono		Mono		Mono	
Number of Cells		96		72		36		36		36	
<b>Mechanical Specifications</b>											
Dimensions		1602x1061x40mm (63.1x41.8x1.57in)		1595x801x40mm (62.8x31.5x1.57in)		1213x547x35mm (47.8x21.5x1.4in)		620x284x25mm (24.4x11.2x1.0in)		446x284x25mm (17.6x11.2x1.0in)	
Weight		20.0kg(44.1lbs)		15.5kg(34.2lbs)		8.0kg(17.6lbs)		2.5kg(5.5lbs)		1.6kg(3.5lbs)	

Module No	CS5P-220P	CS5P-230P	CS5P-240P	CS5A-170P	CS5A-180P	CS5C-80P	CS5C-90P	CS5H-30P	CS5H-40P	CS5E-20P	
<b>Electrical Characteristics</b>											
Rated Power	Pmax	220W	230W	240W	170W	180W	80W	90W	30W	40W	20W
Voltage at Typical Power	Vmp(V)	46.6V	47V	47.6V	35.2V	35.7V	17.6V	18V	17.3V	17.5V	17.5V
Current at Typical Power	Imp(A)	4.73A	4.89A	5.04A	4.83A	5.04A	4.55A	4.99A	1.74A	2.29A	1.15A
Open Circuit Voltage	Voc(V)	58.3V	58.7V	58.9V	43.9V	44.2V	21.9V	22.3V	21.4V	21.8V	21.8V
Short Circuit Current	Isc(A)	5.05A	5.22A	5.38A	5.2A	5.41A	4.91A	5.34A	1.96A	2.49A	1.24A
Power Tolerance		+5W(approx. +2.1%)		+5W(approx. +2.8%)		+5W(approx. +6%)		+4W(approx. +10%)		+2W(approx. +10%)	
Maximum System Voltage		1,000V(IEC)/600V(UL)		1,000V(IEC)/600V(UL)		1,000V(IEC)/600V(UL)		1,000V(IEC)/600V(UL)		1,000V(IEC)/600V(UL)	
Maximum Series Fuse Rating		10A		10A		10A		5.5A		2.5A	
NOCT		45°C		45°C		45°C		45°C		45°C	
Temp. Coefficient	Voc	-0.34%/°C		-0.34%/°C		-0.34%/°C		-0.34%/°C		-0.34%/°C	
	Isc	0.065%/°C		0.065%/°C		0.065%/°C		0.065%/°C		0.065%/°C	
	Pmax	-0.43%/°C		-0.43%/°C		-0.43%/°C		-0.43%/°C		-0.43%/°C	
<b>Cell Information</b>											
Cell Material		Poly		Poly		Poly		Poly		Poly	
Number of Cells		96		72		36		36		36	
<b>Mechanical Specifications</b>											
Dimensions		1602x1061x40mm (63.1x41.8x1.57in)		1595x801x40mm (62.8x31.5x1.57in)		1213x547x35mm (47.8x21.5x1.4in)		630x542x25mm (24.8x21.3x1.0in)		620x284x25mm (24.4x11.2x1.0in)	
Weight		20.0kg(44.1lbs)		15.5kg(34.2lbs)		8.0kg(17.6lbs)		3.5kg(7.7lbs)		2.5kg(5.5lbs)	

TRUST-WORTHY

CUSTOMER VALUE

SOPHISTICATION

Module No	CS6P-210M	CS6P-220M	CS6P-230M	CS6P-240M	CS6P-250M	CS6A-160M	CS6A-170M	CS6A-180M	CS6C-130M	CS6C-140M	
<b>Electrical Characteristics</b>											
Rated Power	Pmax	210W	220W	230W	240W	250W	160W	170W	180W	130W	140W
Voltage at Typical Power	Vmp(V)	29.3V	29.5V	29.9V	30.2V	30.4V	23.3V	23.5V	23.8V	17.6V	18V
Current at Typical Power	Imp(A)	7.17A	7.45A	7.7A	7.95A	8.22A	6.86A	7.24A	7.58A	7.38A	7.76A
Open Circuit Voltage	Voc(V)	36.7V	36.9V	37.1V	37.3V	37.5V	29.2V	29.4V	29.6V	22.1V	22.3V
Short Circuit Current	Isc(A)	7.77A	7.97A	8.22A	8.46A	8.74A	7.56A	7.8A	8.07A	7.95A	8.28A
Power Tolerance		+5W(approx. +2.0%)					+5W(approx. +2.8%)			+5W(approx. +3.6%)	
Maximum System Voltage		1,000V(IEC)/600V(UL)					1,000V(IEC)/600V(UL)			1,000V(IEC)/600V(UL)	
Maximum Series Fuse Rating		15A					15A			15A	
NOCT		45°C					45°C			45°C	
Temp. Coefficient	Voc	-0.35%/°C					-0.35%/°C			-0.35%/°C	
	Isc	0.060%/°C					0.060%/°C			0.060%/°C	
	Pmax	-0.45%/°C					-0.45%/°C			-0.45%/°C	
<b>Cell Information</b>											
Cell Material		Mono					Mono			Mono	
Number of Cells		60					48			36	
<b>Mechanical Specifications</b>											
Dimensions		1638x982x40mm (64.5x38.7x1.57in)					1324x982x40mm (52.1x38.7x1.57in)			1485x666x40mm (58.4x26.2x1.57in)	
Weight		20kg(44.1lbs)					16.0kg(35.3lbs)			12kg(26.5lbs)	

Module No	CS6P-220P	CS6P-230P	CS6P-240P	CS6A-170P	CS6A-180P	CS6C-130P	CS6C-140P	CS6D-60P	CS6D-70P	CS6R-40P	
<b>Electrical Characteristics</b>											
Rated Power	Pmax	220W	230W	240W	170W	180W	130W	140W	60W	70W	40W
Voltage at Typical Power	Vmp(V)	29.2V	29.6V	29.9V	23.2V	23.5V	17.4V	17.9V	17.4V	18V	17.6V
Current at Typical Power	Imp(A)	7.53A	7.78A	8.03A	7.32A	7.65A	7.46A	7.84A	3.46A	3.88A	2.27A
Open Circuit Voltage	Voc(V)	36.6V	36.8V	37V	29.2V	29.4V	21.9V	22.1V	21.7V	22.1V	21.8V
Short Circuit Current	Isc(A)	8.09A	8.34A	8.59A	7.92A	8.19A	8.07A	8.4A	3.72A	4.21A	2.48A
Power Tolerance		+5W(approx. +2.1%)			+5W(approx. +2.8%)		+5W(approx. +3.6%)		+7W(approx. +10%)		+4W(approx. +10%)
Maximum System Voltage		1,000V(IEC)/600V(UL)			1,000V(IEC)/600V(UL)		1,000V(IEC)/600V(UL)		1,000V(IEC)/600V(UL)		1,000V(IEC)/600V(UL)
Maximum Series Fuse Rating		15A			15A		15A		10A		10A
NOCT		45°C			45°C		45°C		45°C		45°C
Temp. Coefficient	Voc	-0.34%/°C			-0.34%/°C		-0.34%/°C		-0.34%/°C		-0.34%/°C
	Isc	0.065%/°C			0.065%/°C		0.065%/°C		0.065%/°C		0.065%/°C
	Pmax	-0.43%/°C			-0.43%/°C		-0.43%/°C		-0.43%/°C		-0.43%/°C
<b>Cell Information</b>											
Cell Material		Poly			Poly		Poly		Poly		Poly
Number of Cells		60			48		36		36		36
<b>Mechanical Specifications</b>											
Dimensions		1638x982x40mm (64.5x38.7x1.57in)			1324x982x40mm (52.1x38.7x1.57in)		1485x666x40mm (58.4x26.2x1.57in)		783x666x35mm (30.8x26.2x1.4in)		783x666x35mm (30.8x26.2x1.4in)
Weight		20kg(44.1lbs)			16.0kg(35.3lbs)		12kg(26.5lbs)		12kgs(26.5lbs)		12kgs(26.5lbs)

Module No	CS6P-170PE	CS6P-180PE	CS6P-190PE	CS6P-200PE	CS6A-150PE	CS6A-160PE	CS6A-170PE	
<b>Electrical Characteristics</b>								
Rated Power	Pmax	170W	180W	190W	200W	150W	160W	170W
Voltage at Typical Power	Vmp(V)	28.7V	28.7V	28.8V	28.9V	23.1V	23.1V	23.2V
Current at Typical Power	Imp(A)	5.93A	6.62A	6.60A	6.93A	6.50A	6.92A	7.33A
Open Circuit Voltage	Voc(V)	35.8V	35.9V	36.0V	36.2V	28.8V	28.9V	29.2V
Short Circuit Current	Isc(A)	6.62A	6.98A	7.33A	7.67A	7.12A	7.51A	7.85A
Power Tolerance		+5W(approx. +2.5%)					+5W(approx. +2.9%)	
Maximum System Voltage		1,000V(IEC)/600V(UL)					1,000V(IEC)/600V(UL)	
Maximum Series Fuse Rating		15A					15A	
NOCT		45°C					45°C	
Temp. Coefficient	Voc	-0.35%/°C					-0.35%/°C	
	Isc	0.08%/°C					0.08%/°C	
	Pmax	-0.42%/°C					-0.42%/°C	
<b>Cell Information</b>								
Cell Material		Poly-crystalline Solar Grade Silicon					Poly-crystalline Solar Grade Silicon	
Number of Cells		60					48	
<b>Mechanical Specifications</b>								
Dimensions		1638x982x40mm (64.5x38.7x1.57in)					1324x982x40mm (52.1x38.7x1.57in)	
Weight		20.0kg(44.1lbs)					16.0kg(35.3lbs)	

\*Standard Test Conditions (STC) Definition - Irradiance of 1000W/m², Spectrum AM 1.5, and Cell Temperature of 25°C

\*\*Please refer to individual product datasheet for product certifications and warranty information.